



Sorting Skeleton Types

I can sort animals based on their skeletons.



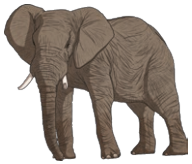
Cut out and stick the animals based on the type of skeleton they have.

Endoskeleton	Exoskeleton	Hydrostatic Skeleton



Remember:

- Endoskeleton means the skeleton is on the inside.
- Exoskeleton means the skeleton is on the outside.
- Hydrostatic skeleton means the animal has no bones.



elephant



tortoise



slug



butterfly



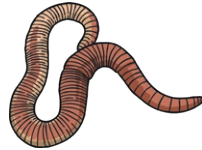
human



jellyfish



mouse



worm



goldfish



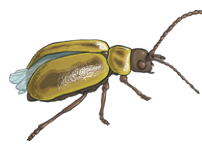
lobster



ant



prawn



beetle



killer whale



fox

Sorting Skeleton Types Answers

Endoskeleton			Exoskeleton		Hydrostatic Skeleton	
