

Recommended

Print onto 250gsm or heavier cardstock for best results.
Score fold lines first using a craft knife or empty ball point pen.
Check for instructions before building.

- 1) Cut
- 2) Hill Fold
- 3) Valley Fold
- 4) Glue

Valley Fold (Fold up)

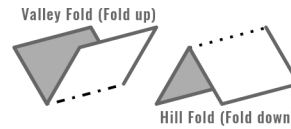


Hill Fold (Fold down)

Basic Instructions

- Printing** You can print all ENKL products on conventional printer paper but end results may be less stable than those printed onto card. We recommend printing these ENKL products on 250gsm cardstock for best results. Printing onto thicker card may make the models more difficult to build.
- Cutting** Cut along the solid black outlines. You can use either scissors or a craft knife to cut out the model. ENKL recommends using scissors for curved areas and a craft knife for more intricate outlines. Designs can mostly be built without a craft knife unless requiring one is explicitly mentioned.
- Folding** Fold along the dotted lines, following the key below to fold up, or down. For best results we recommend scoring along the lines before folding by lightly pressing on them with either a craft knife or empty ballpoint pen.

- 1) Cut —————
- 2) Valley Fold - - - - -
- 3) Hill Fold



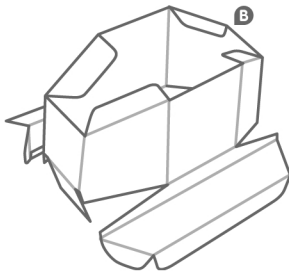
- Gluing** Glue the tabs in the order that they're numbered. Every tab consists of white space with a number or letter inside like the example below. For best results use a non-liquid glue that dries quickly and apply it evenly to the entire tab.

Glue **2**

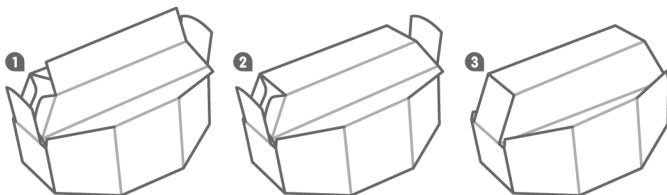
- Parts** For models with numerous parts you will find labels on the page to help with the construction. Each part has a label on the page marked "Part X" as well as a smaller label on the parts themselves. When parts need to be glued together the tabs connecting the two parts will be labelled with the corresponding part letter.

Walker Instructions

- 1) Cut out the model's parts using the solid black outline.
- 2) Following the key above, fold along the dotted lines.
- 3) Fold around part B and glue tab 1 as shown.



- 4) Glue tab 2 down and then glue down tabs 3-6 as shown below.



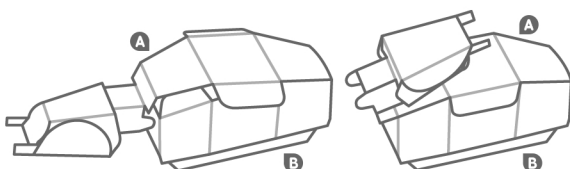
- 5) Assemble the walker's head by gluing down tabs 1 and 2 on part A as shown.



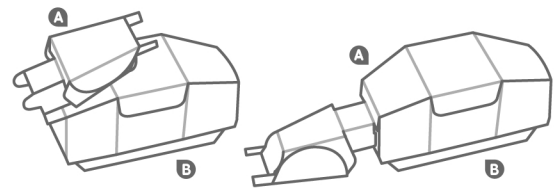
- 6) Flip over part A and glue tabs 3 and 4 to create the neck as shown.



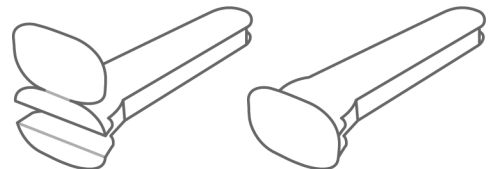
- 7) Connect parts A and B using tabs 7-12 as shown.



- 8) Glue down tab 13 lowering the walker's head and slot the exposed flaps on part A into the cuts on part B as shown.



- 9) To build the legs fold them around gluing tab 1 in place and glue the bottom of the boot down to the back of the page as shown. Do this for parts C-F.



- 10) Glue the legs (Parts C, D, E and F) to part B using tabs A, B, C and D.

