

# Beetles follow up tasks

<http://www.sciencekids.co.nz/sciencefacts/animals/beetle.html>

# Quick Start

- What type of beetle helps pest population?
- How many types of beetles are eaten by humans?
- Which beetle was a sacred symbol in Ancient Egypt?

# Individual Thinking



Are beetles useful?

Tell somebody your answer, giving reasons from the text.

Record your thoughts on paper.

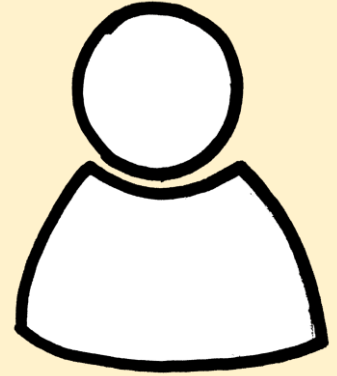
# Individual Thinking



Why are some types of beetles seen as pests?

Is this a fair?

# Solo Work



## Fact Dump

Taking the text away, you have five minutes to remember as many facts as you can about beetles.