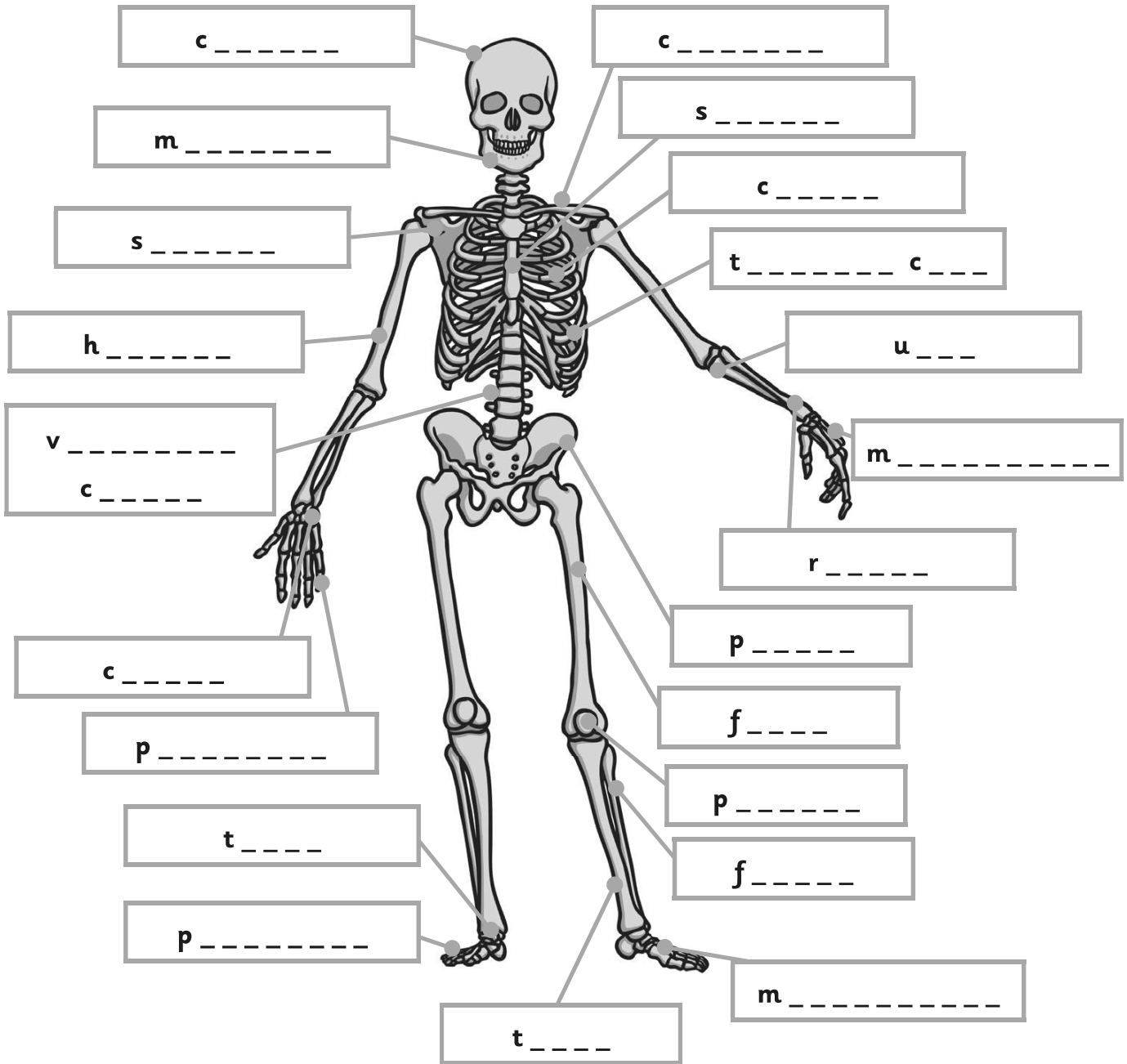




Scientific Names Skeleton Labelling Sheet



Key Words: cranium, vertebral column, costal, thoracic cage, sternum, clavicle, talus, humerus, femur, tibia, fibula, phalanges (x 2), metacarpals, scapula, mandible, carpals, pelvis, patella, metatarsals, radius, ulna

Scientific Names Skeleton Labelling Sheet Answers

